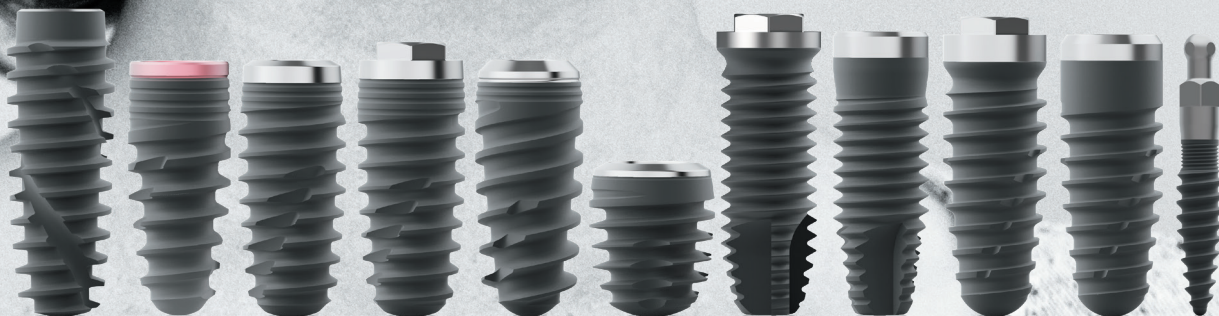


QUICK GUIDE  
TO DENTAL IMPLANTS

**btk**  Implanting Trust,  
Smile Again!

# DENTAL IMPLANTS



visit [btk.dental](http://btk.dental)



## CORPORATE BACKGROUND

Privately held BTK BIOTEC was founded in 1998 in order to improve the quality of life of people with missing teeth.

BTK is a dedicated supporter of the genuine "100% Made in Italy" label, because with this it is guaranteed that BTK products are of unmatched Italian craftsmanship and premium quality materials offering dedicated specialization and ample differentiation.



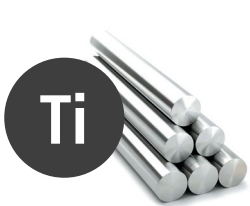
BTK Headquarters - NORTH ITALY



PRODUCTION AREA

## Implanting Trust, Smile again!

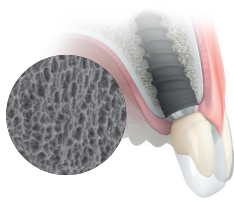
By combining cutting-edge technologies and biology, BTK's mission is to offer affordable and personalized implant-borne solutions thereby sustainably improving the daily life of dental patients. Together with leading professionals, BTK strives to become a reference in replacing missing teeth with trusted implant solutions in order to improve oral health around the globe.



### PREMIUM QUALITY MATERIALS

Grade 4 commercially pure titanium (ASTM F 67 / ISO 5832-2) is btk's material of choice for dental implants. While being somewhat more difficult to process, grade 4 provides the highest strength and durability characteristics among the commercially pure titanium grades, making it the natural choice for btk dental implants.

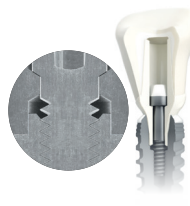
Grade 5 commercially pure titanium (ASTM F 136 / ISO 5832-3) is used for btk's prosthetic components, as these are subject to certain levels of stress, and for MINI implants. This high-strength version, also known as Ti-6Al-4V, is widely used in orthopedics and shows excellent long-term physical/mechanical properties.



### DAE - ENDOSSEOUS SURFACE

Clinical trials confirm that roughened endosseous surfaces perform better than machined surfaces concerning endosseous wound healing, "de novo" bone formation and reduced time-to-loading.

Our DAE (dual acid-etched) process aims to obtain a moderately rough surface with a controlled micro-roughness.



### IMPLANT- ABUTMENT CONNECTION

The precision of the connection between implant and abutment creating a tight seal may be beneficial in preventing inflammatory bacteria propagating in the interface between different components.

Apart from that, extremely low tolerances as applied by BTK help to avoid or reduce micromovements. Providing precision in every part produced is one of our key contributions ensuring long-term restorative success.



### RESTORATIVE OPTIONS

Dental implant therapy has the main purpose to replace missing teeth and associated structures.

It is therefore pre-prosthetic surgery satisfying prosthodontic needs and indications. In order to achieve this objective, btk offers a focused portfolio of restorative solutions backed-up by comprehensive clinical experience.

The available armamentarium meets patient's individual needs and clinicians' preferences.



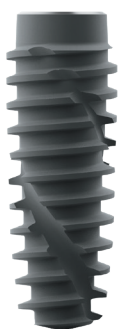
### MADE IN ITALY, USED GLOBALLY

We constantly ensure that the quality of our products and services meet the high expectations of our customers and their patients.

Specialized professionals are taking care to offer comprehensive solutions in applied research, engineering, education and related activities.

Our brand is a solid promise of quality, we are certified UNI ENISO 9001, UNI EN ISO 13485 and MDD 93/42/EEC and subsequent amendments and additions.

# BTK IMPLANT LINES



IS+ MTD

## IS+

This bone-level implant, which replicates the root of the natural tooth and has excellent self-tapping characteristics, thanks to its particular morphology, is suitable for use as a versatile implant, obtaining excellent results in terms of simplicity of insertion and primary stability in bone of any quality, from the most corticalized bone to the softest bone. It is particularly suitable for early or immediate positioning after the extraction or loss of natural teeth and in implant sites characterized by regenerated bone.

The particular configuration of the profile of the thread offers, in combination with the morphology of the implant core and the surgical procedure, excellent primary stability and also an excellent BIC (Bone-to-Implant-Contact) value, compared with other products present in the BTK Implant Portfolio, thus making IS+ the ideal implant for immediate loading procedures in post-extractive implant sites or with regenerated bone.

The KR prosthetic components are used on the DR connection, thanks to the perfect compatibility between the two connections.

MTD	● Ø 3.3 mm	○ Ø 3.7 mm	● Ø 4.1 mm	● Ø 4.8 mm	● Ø 6.0 mm
	DR				
L 6 mm	-	-	132DR41G	132DR48G	132DR60G
L 8 mm	132DR33J	132DR37J	132DR41J	132DR48J	132DR60J
L 10 mm	132DR33L	132DR37L	132DR41L	132DR48L	132DR60L
L 12 mm	132DR33N	132DR37N	132DR41N	132DR48N	-
L 14 mm	132DR33Q	132DR37Q	132DR41Q	132DR48Q	-
L 16 mm	-	132DR37S	132DR41S	-	-



IS KONE MTH / INT / EXT

## IS KONE

This bone-level, root-shaped and self-tapping implant offers a back-tapered, micro-threaded smooth neck portion of 0,8-1,15 mm and is well suitable for most indications.

IS KONE is placed at bone level and offers both, healing modes. The single-lead square thread pitch on IS KONE measures 0.9 mm for all diameters including Ø 2.9 mm / Ø 3.3 mm / Ø 3.7 mm / Ø 4.1 mm / Ø 4.8 mm / Ø 6 mm. IS KONE is a highly versatile type of implant line as it offers three different abutment connections either external (EXT) or internal (INT) hexagon, or as a third option the well-proven 11° (MTH) hexagon having regular (KR) corresponding prosthetic components.

MTH	● Ø 2.9 mm	● Ø 3.3 mm	○ Ø 3.7 mm	● Ø 4.1 mm	● Ø 4.8 mm	● Ø 6.0 mm
	KN		KR			
L 8 mm	129KN29J	129KR33J	129KR37J	129KR41J	129KR48J	129KR60J
L 10 mm	129KN29L	129KR33L	129KR37L	129KR41L	129KR48L	129KR60L
L 12 mm	129KN29N	129KR33N	129KR37N	129KR41N	129KR48N	-
L 14 mm	129KN29Q	129KR33Q	129KR37Q	129KR41Q	129KR48Q	-
L 16 mm	-	-	129KR37S	129KR41S	-	-
L 18 mm	-	-	129KR37T	129KR41T	-	-

INT	● Ø 3.3 mm	○ Ø 3.7 mm	● Ø 4.1 mm	● Ø 4.8 mm	
	IR			IW	
L 8 mm	129IR33J	129IR37J	129IR41J	129IR48J	129IW48J
L 10 mm	129IR33L	129IR37L	129IR41L	129IR48L	129IW48L
L 12 mm	129IR33N	129IR37N	129IR41N	129IR48N	129IW48N
L 14 mm	129IR33Q	129IR37Q	129IR41Q	129IR48Q	129IW48Q
L 16 mm	-	129IR37S	129IR41S	-	-

EXT	● Ø 3.3 mm	○ Ø 3.7 mm	● Ø 4.1 mm	● Ø 4.8 mm
	EN		ER	
L 8 mm	131EN33J	131ER37J	131ER41J	131ER48J
L 10 mm	131EN33L	131ER37L	131ER41L	131ER48L
L 12 mm	131EN33N	131ER37N	131ER41N	131ER48N
L 14 mm	131EN33Q	131ER37Q	131ER41Q	131ER48Q
L 16 mm	-	131ER37S	131ER41S	-
L 18 mm	-	131ER37T	131ER41T	-



**BT SAFE MTH**    **BT NANO MTH**

## BT SAFE & BT NANO

This bone-level, root-shaped and self-tapping implant offers a back-tapered, micro-threaded smooth neck portion of 0.7 mm and is well suitable for early or immediate placement following extraction or loss of natural teeth and / or for immediate loading applications in edentulous jaws as it provides excellent primary stability.

BT SAFE is placed at bone level and offers both healing modes. The double-lead square thread pitch on BT SAFE measures 2.4 mm for all diameters including Ø 3.3 mm / Ø 3.7 mm / Ø 4.1 mm / Ø 4.8 mm / Ø 6 mm. BT SAFE implant line offers one abutment connection based on the well-proven 11° morse-taper hexagon having regular (KR) or wide (KW) corresponding prosthetic components.

BT SAFE	● Ø 3.3 mm	○ Ø 3.7 mm	● Ø 4.1 mm	● Ø 4.8 mm	● Ø 4.8 mm	● Ø 6.0 mm
	KR			KW		
L 6 mm	-	-	120KR41G	120KR48G	120KW48G	120KW60G
L 8 mm	-	120KR37J	120KR41J	120KR48J	120KW48J	120KW60J
L 10 mm	120KR33L	120KR37L	120KR41L	120KR48L	120KW48L	120KW60L
L 12 mm	120KR33N	120KR37N	120KR41N	120KR48N	120KW48N	-
L 14 mm	120KR33Q	120KR37Q	120KR41Q	120KR48Q	120KW48Q	-
L 16 mm	-	120KR37S	120KR41S	-	-	-
L 18 mm	-	-	120KR41T	-	-	-

BT NANO	● Ø 4.2 mm	● Ø 4.8 mm	● Ø 6.0 mm
	KW		
L 5 mm	123KW42E	123KW48E	123KW60E
L 6 mm	123KW42G	123KW48G	123KW60G



**BT KLASSIC INT / EXT**

## BT KLASSIC

This bone-level, cylindrical, traditional-type implant offers a parallel smooth neck portion between 0.7 mm - 1.5 mm (depending on diameter / type) and is especially suitable for classic two-stage procedures, where the implant is placed at bone level and covered with surrounding soft tissue during the healing phase (two-stage healing).

BT KLASSIC employs either an internal (INT) or external (EXT) hexagon connection.

The fine V-thread pitch on the BT KLASSIC measures 0.6 mm for diameters Ø 3.25 mm / Ø 3.75 mm / Ø 4.00 mm and 0.9 mm for diameters Ø 4.25 mm and Ø 5.00 mm.

INT	● Ø 3.25 mm	○ Ø 3.75 mm	● Ø 4.25 mm	● Ø 5.0 mm
	IR		IM	IW
L 8,5 mm	-	106IR37J	106IM42J	106IW50J
L 10 mm	106IR32L	106IR37L	106IM42L	106IW50L
L 11,5 mm	106IR32M	106IR37M	106IM42M	106IW50M
L 13 mm	106IR32P	106IR37P	106IM42P	106IW50P
L 15 mm	106IR32R	106IR37R	106IM42R	106IW50R

EXT	● Ø 3.25 mm	● Ø 3.25 PL mm	○ Ø 3.75 mm	● Ø 4.0 mm	● Ø 5.0 mm
	EN	ER			EW
L 8,5 mm	103EN32J	103ER32J	103ER37J	103ER40J	103EW50J
L 10 mm	103EN32L	103ER32L	103ER37L	103ER40L	103EW50L
L 11,5 mm	103EN32M	103ER32M	103ER37M	103ER40M	103EW50M
L 13 mm	103EN32P	103ER32P	103ER37P	103ER40P	103EW50P
L 15 mm	103EN32R	103ER32R	103ER37R	103ER40R	103EW50R
L 18 mm	-	-	-	103ER40T	-



**BT KONIC INT / EXT**

## BT KONIC

This bone-level, root-shaped type implant offers a parallel smooth neck portion of 1.0 mm (INT) - 1.2 mm (EXT) and is especially suitable for classic two-stage procedures, where the implant is placed at bone level and covered with surrounding soft tissue during the healing phase (two-stage healing).

BT KONIC employs either an internal (INT) or external (EXT) hexagon connection. The single-lead thread pitch on BT KONIC measures 0.8 mm - 0.9 mm for all diameters including Ø 3.25 mm / Ø 4.00 mm / Ø 5.00 mm.

INT	● Ø 3.25 mm	● Ø 4.0 mm	● Ø 5.0 mm
	IR		IW
L 8,5 mm	-	108IR40J	108IW50J
L 10 mm	108IR32L	108IR40L	108IW50L
L 11,5 mm	108IR32M	108IR40M	108IW50M
L 13 mm	108IR32P	108IR40P	108IW50P
L 15 mm	108IR32R	108IR40R	108IW50R

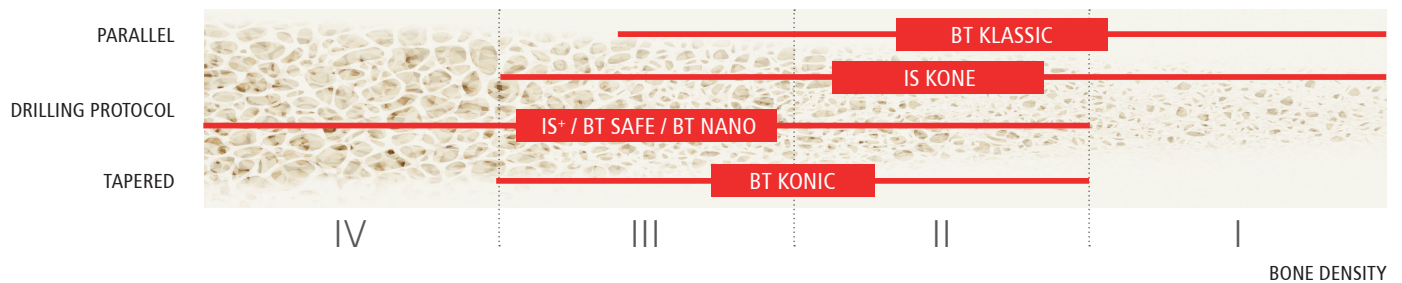
EXT	● Ø 3.25 mm	● Ø 4.0 mm	● Ø 5.0 mm
	EN	ER	EW
L 8,5 mm	-	107ER40J	107EW50J
L 10 mm	107EN32L	107ER40L	107EW50L
L 11,5 mm	107EN32M	107ER40M	107EW50M
L 13 mm	107EN32P	107ER40P	107EW50P
L 15 mm	107EN32R	107ER40R	107EW50R

## COLOR CODES FOR DIFFERENT IMPLANT DIAMETERS




2.9	3.25 / 3.3	3.7 / 3.75	4.0 / 4.1	4.2 / 4.7	4.8 / 5.0	4.8 KW	6.0
RED	PURPLE	WHITE	BLUE	GREY	YELLOW	ORANGE	GREEN

## RECOMMENDED IMPLANT SELECTION BASED ON BONE DENSITY AND DRILLING PROTOCOL

### IMPLANT DESIGN



## CHARACTERIZATION OF BTK IMPLANT-ABUTMENT CONNECTIONS

 <b>MORSE-TAPER (MTH/MTD)</b>	 <b>INTERNAL HEXAGON (INT)</b>	 <b>EXTERNAL HEXAGON (EXT)</b>
<p><b>BTK's morse-taper dodecagon connection</b> comprises a 2.6 mm conical portion at 11° above a dodecagon configuration combined with a M1.4 (KN), M1.6 (KR/DR) or M1.8 (KW) abutment screw to deliver adequate pre-load with a minimum of torque force application.</p>	<p><b>BTK's internal hexagon connection</b> comprises a parallel hexagon of 2 mm length opening with a small conical portion combined with a M1.8 abutment screw to deliver adequate pre-load with a minimum of torque force application.</p>	<p><b>BTK's external hexagon connection</b> comprises a parallel hexagon at 0.7 mm height and a 90° shoulder to allow a flat-to-flat margin fit to the implant. Abutments are connected to the implant using a M1.8 (EN) or M2.0 (ER/EW) abutment screw.</p>
<b>KN</b> = KONIC NARROW		<b>EN</b> = EXTERNAL NARROW
<b>KR</b> = KONIC REGULAR <b>DR</b> = DODECAGON REGULAR	<b>IR</b> = INTERNAL REGULAR	<b>ER</b> = EXTERNAL REGULAR
	<b>IM</b> = INTERNAL MEDIUM	
<b>KW</b> = KONIC WIDE	<b>IW</b> = INTERNAL WIDE	<b>EW</b> = EXTERNAL WIDE

## SOLUTIONS FOR THE STABILIZATION OF REMOVABLE DENTURES



### MINI

- self-tapping, Ø 2.5mm / 1.9mm
- monotype, ball anchor
- for economic denture fixation

	Ø 1.9	Ø 2.5
L 10 mm	IMI19100A	IMI25100A
L 11,5 mm	IMI19115A	IMI25115A
L 13 mm	IMI19130A	IMI25130A
L 15 mm	IMI19150A	IMI25150A

### **BTK PERSONAL TUTOR**

A program for individual case planning and execution supported by experienced professionals in order to leverage know-how and maximize clinical experience with the aim to achieve sustainable high patient satisfaction rates.

**BTK is always at your disposal for any request for further follow-up or information, promoting periodic and ad-hoc training course.**

### **CERTIFIED QUALITY SYSTEM**

**BIOTEC is certified UNI EN ISO 9001  
and UNI EN ISO 13485.**



CE marked product, in accordance with Directive 93/42/EEC and subsequent modifications and additions.

### **MADE IN ITALY USED GLOBALLY**



We constantly ensure that the quality of our products and services meet the high expectations of our customers and their patients.

Specialized professionals are taking care to offer comprehensive solutions in applied research, engineering, education and related activities.