

DIGITAL DENTISTRY
CUSTOM-MADE MEDICAL DEVICES

btk  Implanting Trust,
Smile Again!

3D PRINTED
DENTAL IMPLANTS

IUXTA-3D



SCREW-RETAINED
AND SPECIFIC:
**CUSTOMIZED FOR
YOUR PATIENTS**



visit btk.dental

FOLLOW US ON 

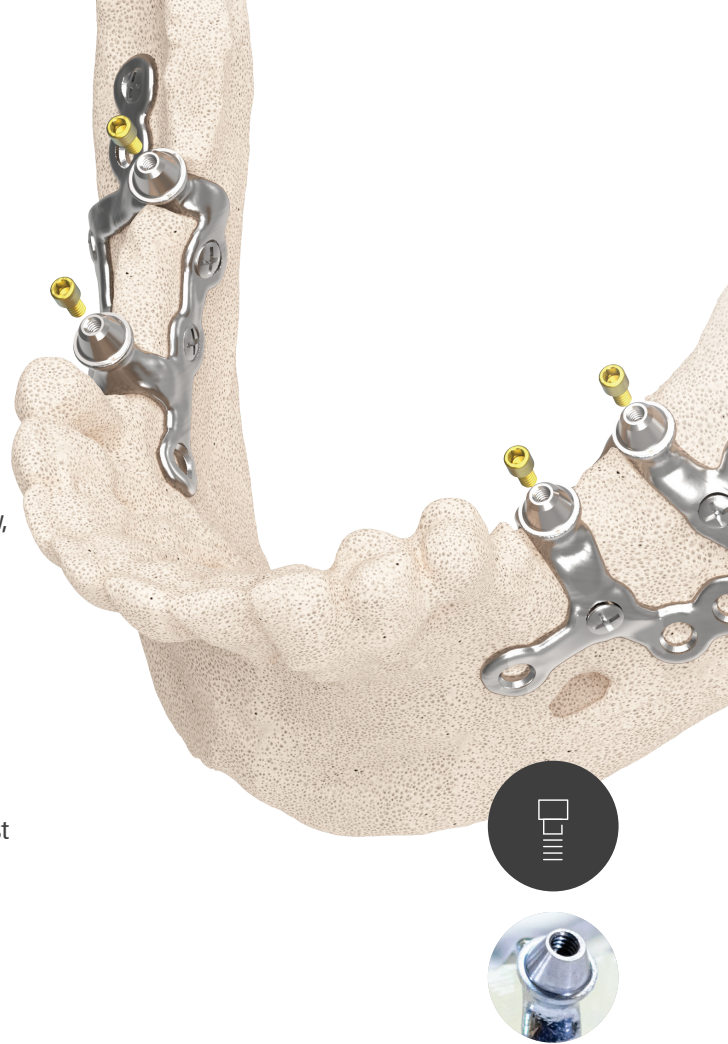
IUXTA-3D

IUXTA-3D subperiosteal implant represents a real innovation in the solutions for maxilla and mandibular severe atrophy. Through a totally digital workflow, starting with the patient's exams, specialist can perform an accurate project, custom made for the individual needs of the patient.

Thanks to over 20 years of experience in dental implants, and to many documented clinical cases, we update IUXTA-3D subperiosteal implants: **from now they are offered for screw-retained protocol, allowing to obtain appropriate and reliable prosthetic solutions.**

A revolution in iuxta-osseous medical devices, that takes full advantage on the quality and precision of digital methods, by supporting them with the best manufacturing technology.












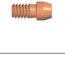

It is possible to perform any kind of rehabilitations: from small edentulism to full arches, for mandibular or maxilla.



Innovative features of IUXTA-3D:

- ▶ **DEDICATED TECHNICAL ASSISTANCE**
Dedicated report for each case from the planning to the surgery.
- ▶ **100% DIGITAL WORKFLOW**
Customized on each patient.
- ▶ **REPORT CUSTOMIZED FOR EVERY CASE**
With 3D previews of the project and a detailed analysis of the implant and screws in relation to critical anatomical structures.
- ▶ **IN TITANIUM FOR MEDICAL USE**
To guarantee the highest standards of biocompatibility and mechanical resistance.
- ▶ **HIGH CONTACT SURFACE**
Optimized by FEM studies on strenghts analysys.
- ▶ **DESIGN-SHAPED SCREW HOLES**
To ensure the best precision and facilitate surgery.
- ▶ **SCREW RETAINED PROSTHESYS**
To ensure accuracy and oral hygiene.
- ▶ **WIDE RANGE OF PROSTHETIC COMPONENTS**
To meet all restoration requirements.
- ▶ **IMMEDIATE LOADING PROSTHESYS**
Manufactured and supplied before the surgery.

PROSTHETIC COMPONENTS FOR IUXTA-3D

	COVERING CAPS BS H5.7 with screw Kit 4pcs	330BS0A0.04
	BASE BT LINK BS H1mm Ø4.8mm No Cap. Rot with screw	247BS1A1
	TEMPORARY ABUTMENT BS Rotating with screw	210BS1R0
	TRANSFER PROPICK-UP BS Hutile18.5mm Rot. Long Screw	323BS0R0
	IMPRESSION POST PICK-UP SCREW M2 Hex1.20 H18.2mm	690NA308
	IMPLANT REPLICA BS Rotating	301BS0R0
	SCAN ABUTMENT INTRA-ORAL BS Rotating	352BS1A1
	SCAN ABUTMENT EXTRA-ORAL BS Rotating	351BS1A1
	BT LINK BS H1mm Ø4.8mm Rotating	246BS1A1
	CoCr ABUTMENT BS H1.5mm Rotating	240BS1R0
	CASTABLE PLASTIC ABUTMENT BS Rotating	205BS0R0
	RETENTIVE SCREW M2 Hex1.20 for standard prosthetics	690NA307
	RETENTIVE FLAT HEAD SCREW M2 Hex1.20 H5.2mm Tp for BT LINK (CAD CAM prosthesis)	690NA306

The IUXTA-3D implant is supplied with a 3D PRINTED RESIN REPLICA of the device and with the patient's BONE MODEL.
If clinician wants to perform bone modeling during surgery, BTK can provide a SURGICAL GUIDE, to drive the osteotomies.
The BTK Milling Center can also manufacture and deliver the temporary restoration for immediate loading for a fully-digital workflow.
Otherwise BTK can provide the technician the materials for the construction of the temporary restoration.

DIGITAL WORKFLOW

IUXTA-3D

CONE BEAM CT AND PRODUCTION OF A 3D VIRTUAL BONE MODEL

The process starts with the acquisition of the patient's tomographic imaging and of a DICOM file. During the examination, the patient must wear a **dedicated radiological guide**. The **DICOM file is sent by the clinician to the BTK TEAM**. The BTK TEAM checks the feasibility of the case and starts the design phase.

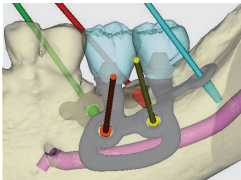


Immediate uploading of the DICOM file of the patient's tomography

<http://upload.btk.dental/btk3d>

DIGITAL PROCESSING OF THE IUXTA-3D STRUCTURE

IUXTA-3D is virtually modelled on the anatomy of the patient by the BTK specialists, using a dedicated software. **The layout of the device is designed to bear the prosthetic load while guaranteeing the best passive fit.** Abutment and screw positions are carefully evaluated on the bases of the prosthetic restoration and in compliance with soft and hard tissues management. The final project is then shared with the Prescribing Doctor, who can make changes and who confirms it before production takes place.



TITANIUM LASER MELTING - 3D PRINTING

After receiving the doctor's prescription, BTK produces the device by means of "Selective Laser Melting" technique. Homogeneous layers of highly pure titanium powder are melted using a laser in a selective way, based on the 3D virtual model. Then BTK milling centre finalizes the device screw-retained abutments through a five-axis machine, ensuring the maximum mechanical precision. The final object meets **high purity and microstructural homogeneity standards** that guarantee high mechanical performance.



CLEANING, DECONTAMINATION, PACKAGING AND SHIPPING

The IUXTA-3D implant is decontaminated in an automatic ultrasonic machine, it is packaged in a cleanroom under controlled atmosphere and delivered ready for sterilization in the clinician's office. All BTK production cycles are controlled and registered so as to guarantee the traceability of the product, in compliance with the most restrictive standards in the Doctor's practice.



TEMPORARY RESTORATION

If required BTK Milling Centre can produce temporary restoration for immediate loading. Built according to the needs of patient and clinician, it can be used even immediately after surgery.



SURGERY AND SURGICAL APPLICATION

The surgery is performed under local anaesthesia or conscious sedation by qualified doctors.



BT SCREW SURGICAL KIT

Cortical screws kit for advanced surgery.

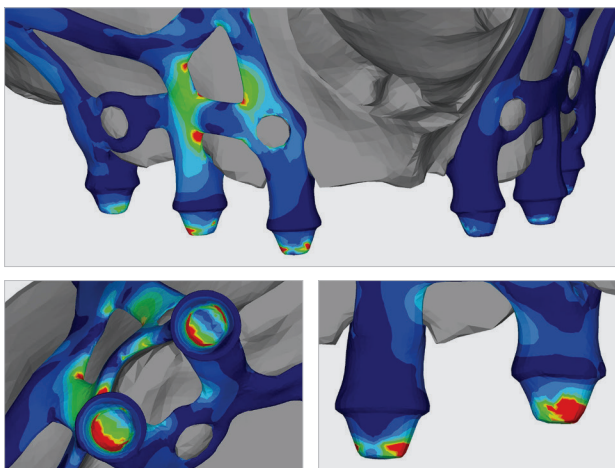
Ref. kit 667NA001



FOLLOW US ON



FEM ANALYSIS is a tool that allows to analyze the three-dimensional model of the medical device by predicting its behavior once subjected to the chewing load. It is therefore possible to optimize the device by studying the best points of support, anchoring and the best morphology to ensure the success of the rehabilitation.



BIBLIOGRAPHY

Cerea M: Una soluzione alternativa al rialzo di seno. Italian Dental Journal. Anno 6. nr. 3/2001; pp. 5-8.

Cerea M: Oltre il seno: l'impianto pterigoideo. Giornale dell'Odontoiatra. 15/05/2011.n°6; pp. 7-8.

Cerea M, Olivetti F, Olivetti M: trattamento di grave atrofia mascellare con griglia e pterigo, www. Italian Dental Journal .it. Dental Academy.it

Virgilio F, Ferrario, Carlo Miani, Alberto Miani: Lineamenti di biomeccanica della masticazione nella pratica gnatologica. Milano: Edi.Ernes, 1988.

Raghoebar GM: 110th volume of Dutch Journal of Dentistry 4. Application of dental implants during the last decades: from subperiosteal to transosteal and endosseous implants. Ned.Tijdschr. Tandheelked. 2003 Nov; 110(11);422-9.

Weiss CM, Reynolds T: A collective conference on the utilization of subperiosteal implants in implant dentistry. J.Oral Implantol.,2000;26(2):127-8.

E.Lloyd Dubrul. Anatomia orale di Sicher.Edizione Italiana a cura di A.Miani e V.F.ferrario. Milano EdiErnes 1988.

Schneider D, Marquardt P, Zwahlen M, Jung RE. A systematic review on the accuracy and the clinical outcome of computer-guided template-based implant dentistry. Clin. Oral Impl. Res. 20 (Suppl. 4), 2009; 73–86. doi: 10.1111/j.1600-0501.2009.01788.x

W. De Vos, J. Casselman, G. R. J. Swennen: Cone-beam computerized tomography (CBCT) imaging of the oral and maxillofacial region: A systematic review of the literature. Int. J. Oral Maxillofac. Surg. 2009; 38: 609–625.

Rafi, H., Karthik, N., Gong, H., Starr, T.L. and Stucker, B.E. "Microstructures and mechanical properties of Ti-6Al-4V parts fabricated by Selective Laser Melting and Electron Beam Melting". Journal of Materials Engineering and Performance, 2013, 1-12.

Vandenbroucke, B. and Kruth, J.P. "Selective Laser Melting of biocompatible metals for Rapid Manufacturing of medical parts". Rapid Prototyping Journal, 2007, 13.4: 196-203.

Mangano C., Bianchi A., Mangano F.G., Dana J., Colombo M., Solop I. and Admakin O.: Custom-made 3D printed subperiosteal titanium implants for the prosthetic restoration of the atrophic posterior. 3D Print Med 2020 Jan 8;6(1):1.

Negrini S. and Viviani L.: The Use of Digital Sub-Periosteal Implants in Severe Maxillary Atrophies Rehabilitation: A Case Report. JHNSS Volume 4 Issue 3 - January 2021.



BIOTEC S.R.L. VIA INDUSTRIA, 53
36031 POVOLARO DI DUEVILLE (VI) - ITALY
TEL: +39 0444 361251 - FAX: +39 0444 361249
mail: info@btk.dental

visit btk.dental

BTK PERSONAL TUTOR

A program for individual case planning and execution supported by experienced professionals in order to leverage know-how and maximize clinical experience with the aim to achieve sustainable high patient satisfaction rates.

BTK is always at your disposal for any request for further follow-up or information, promoting periodic and ad-hoc training course.

CERTIFIED QUALITY SYSTEM

**BIOTEC is certified UNI EN ISO 9001
and UNI EN ISO 13485.**

Custom-made device, in accordance with Directive 93/42/EEC and subsequent modifications and additions. The Company is registered at Italian Health Ministry Register, of custom-made medical device manufacturers. Some products may not be available for non-European countries, due to different current law.

Contact Biotec for more information and to know the availability in your Country.

MADE IN ITALY USED GLOBALLY



We constantly ensure that the quality of our products and services meet the high expectations of our customers and their patients.

Specialized professionals are taking care to offer comprehensive solutions in applied research, engineering, education and related activities.

COD. 06200139 Rev 2 - 10.03.2021
ALL IMAGES ARE FOR ILLUSTRATIVE PURPOSE. The information may contain typographical errors. Custom-made device, in accordance with Directive 93/42/EEC and subsequent modifications and additions. The Company is registered at Italian Health Ministry Register, of custom-made medical device manufacturers. Some products may not be available for non-European countries, due to different current law. Contact Biotec for more information and to know the availability in your Country.

FOLLOW US ON

